

COMPREHENSIVE BEHAVIORAL HEALTH MODEL: PARTNERING TO BUILD SAFE AND SUPPORTIVE SCHOOLS

*Amalio Nieves:
Assistant Superintendent of Social Emotional Learning and Wellness*
*Andria Amador:
Assistant Director of Behavioral Health Services*

Presentation to Boston School Committee
June 8, 2016

Guest Presenters

Dr. Shella Dennerly

Boston Children's Hospital

Director, Children's Hospital Neighborhood Partnerships

John Riordan

Boston Children's Hospital

Director of Community Relations and Partnerships

Dr. Melissa Pearrow

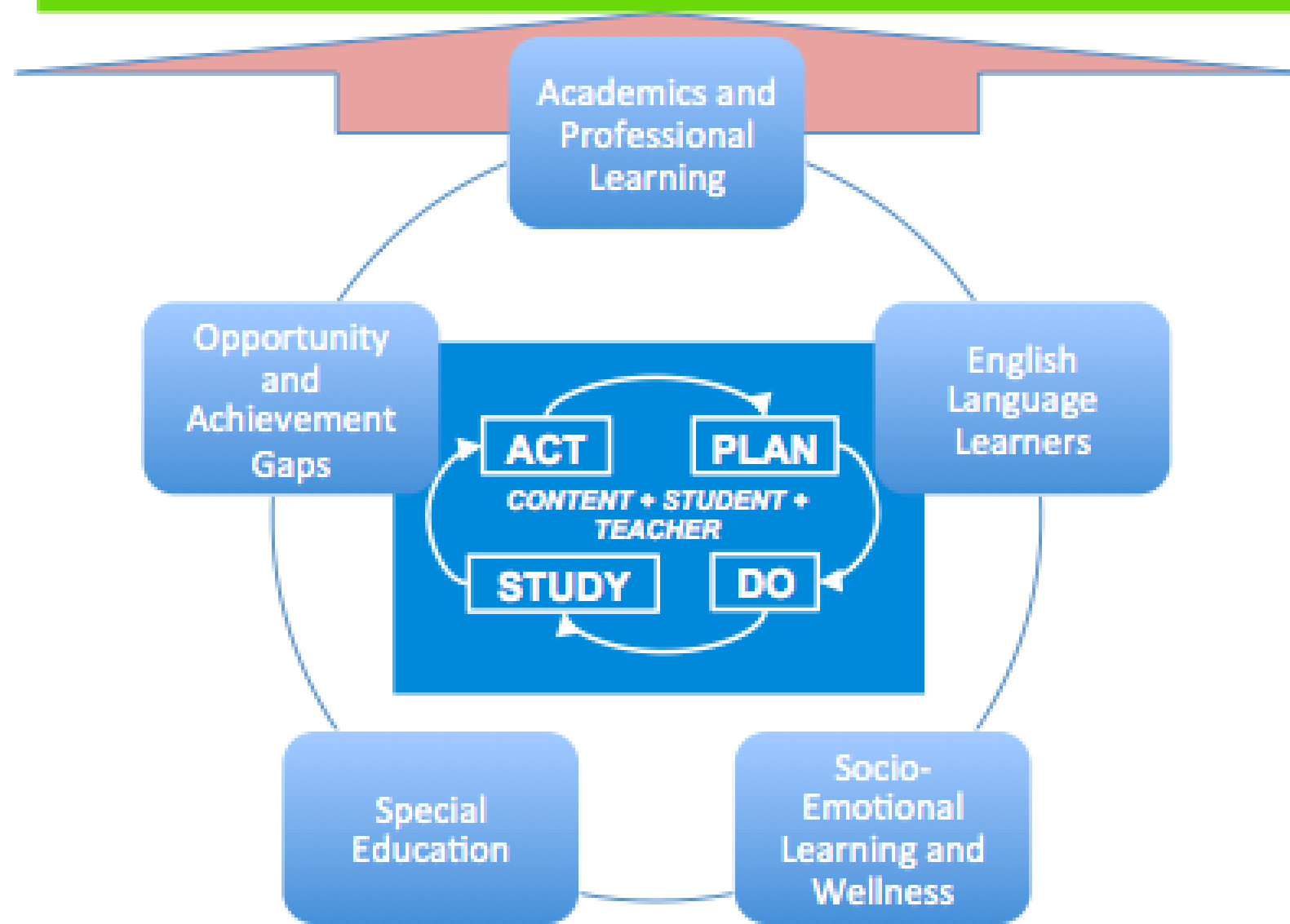
UMass Boston, Associate Professor

Director of School Psychology Program

MA Safe and Supportive Schools Commission member

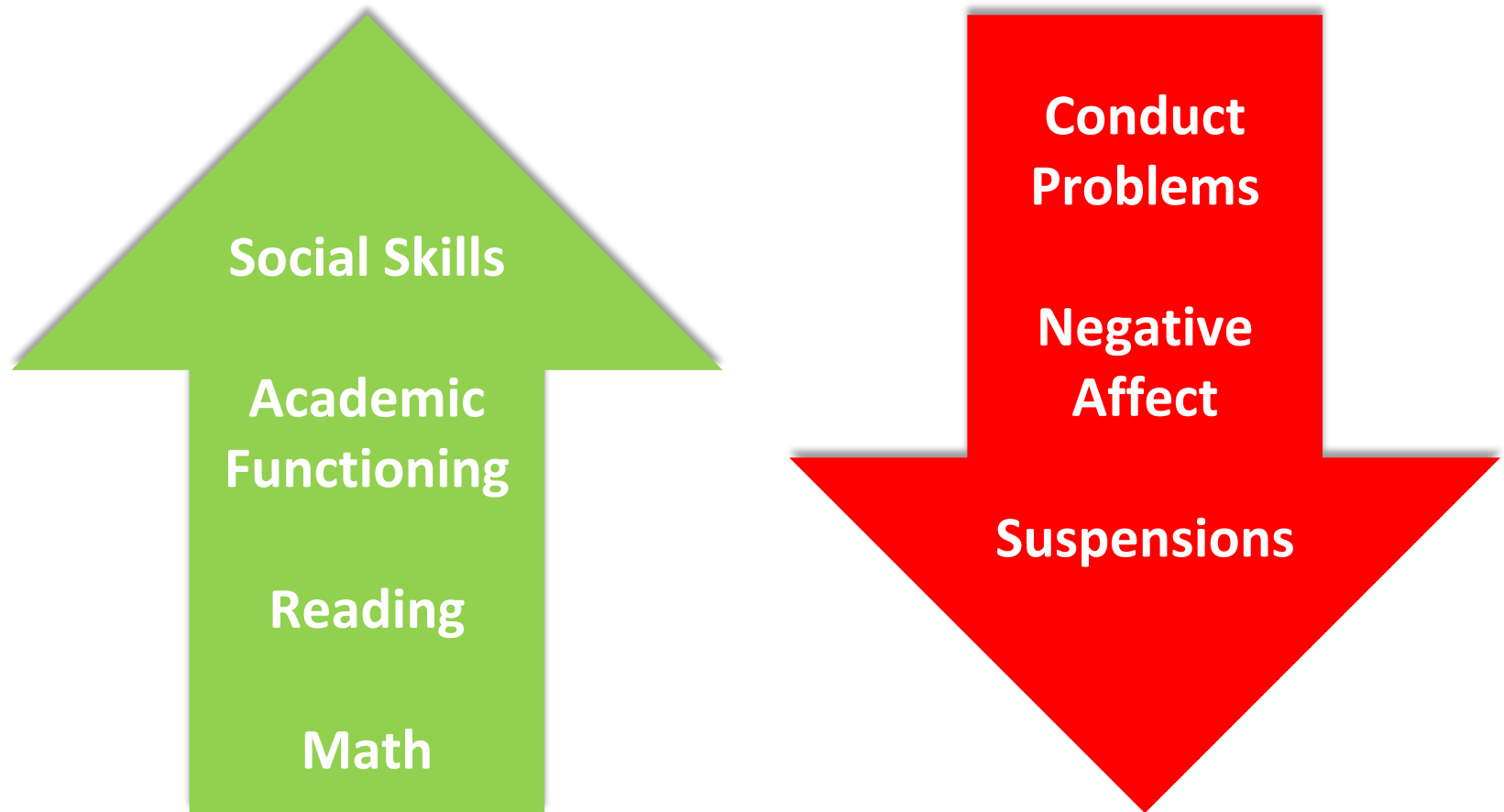


Student Success on CCSS aligned CDT's
through
CCSS Aligned Instructional Practices (Core Actions)



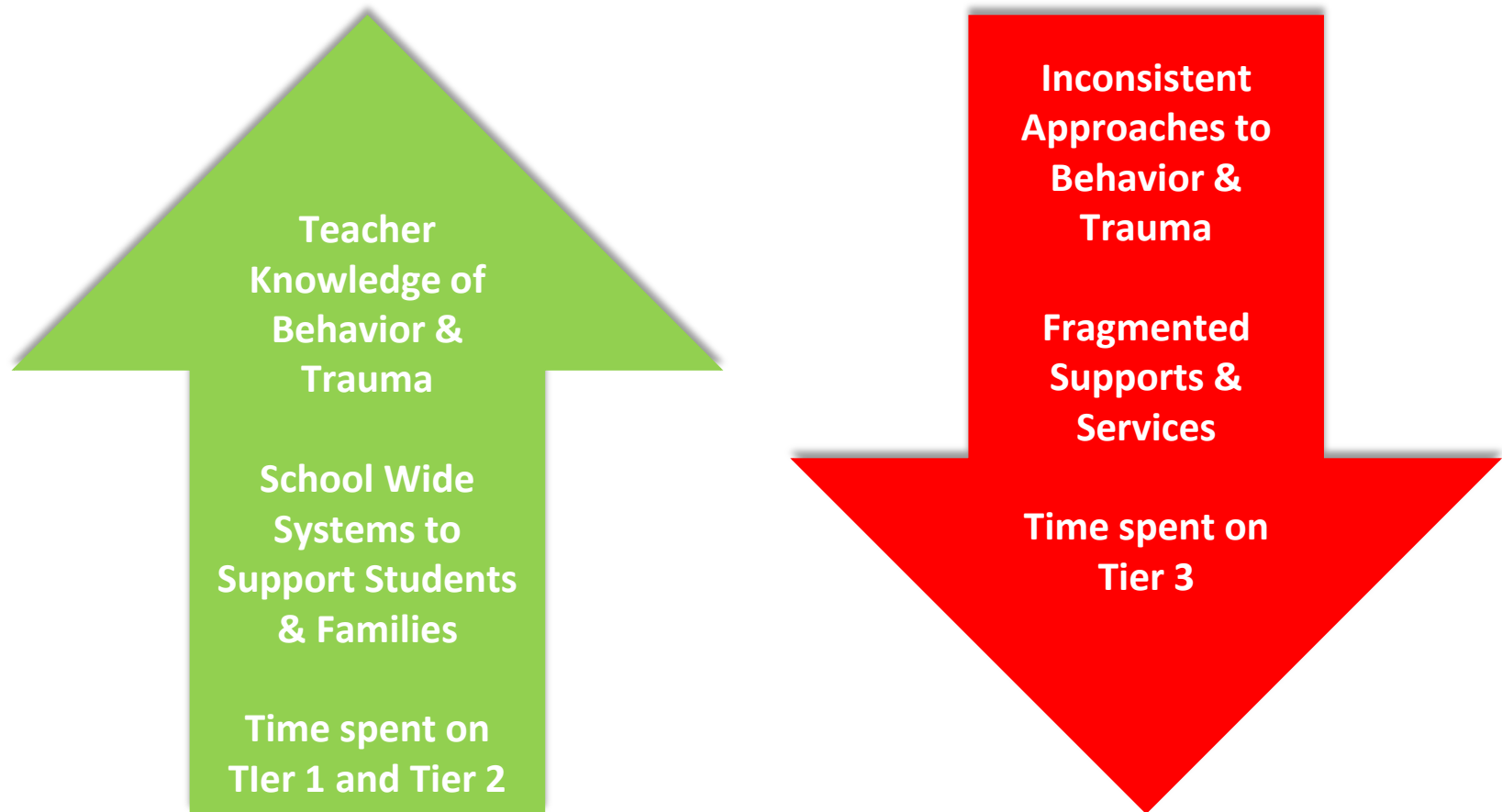
CBHM Outcomes

STUDENT OUTCOMES



CBHM Outcomes

IMPROVED SCHOOL BUILDING CAPACITY





CBHM Schools by Year

Cohort 1 2012-2013

Boston Arts
Academy

Boston Latin

Charles Sumner

George H
Conley

Jackson Mann

Joseph Lee

Mattahunt

New Mission
High School

Samuel W
Mason

Cohort 2 2013-2014

BCLA

Charles H Taylor

Dennis C Haley

Ellison-Parks

Haynes EEC

Higginson/Lewis
K-8

Josiah Quincy

Lee Academy

Margarita Muniz
Academy

Oliver Hazard
Perry

Cohort 3 2014-2015

Boston Teachers
Union School

Brighton High

Charlestown High

Henderson

Higginson Elementary

Franklin D Roosevelt

James Condon
Elementary

Joseph P Tynan

O W Holmes

Richard J Murphy

Winship Elementary

Cohort 4 2015-2016

Carter Development
Center

Harvard-Kent

James P Timilty
Middle

John D Philbrick

King K-8

Mozart Elementary

Phineas Bates

Rafael Hernandez

Umana K-8

West Roxbury
Academy

Cohort 5 2016-2017

East Boston EEC

Edward M
Kennedy

Grew

Guild

Irving

Lyndon

McKay

P.A Shaw

Perkins

Urban Science

CBHM Partnerships



Boston
Public
Schools



University
Partners

Behavioral
Health
Partners



Hospital
Partners



Safe & Supportive Schools

BEHAVIORAL HEALTH

- Students who struggle with behavioral health experience less school success (Wagner, 2005)

TRAUMA

- 1 out of 5 children in Boston have experienced 2 or more adverse childhood experiences (ACE)

SCHOOL CLIMATE

- 75% of BPS stakeholders indicated that a lack social skills and self regulation had the greatest impact on student learning (Boston, 2010)

Capacity Building

BEHAVIORAL HEALTH SERVICES STAFF

- 54 School Psychologists
- 6 Pupil Adjustment Counselors
- 3 Behavior Specialists
- 8 Network Social Workers

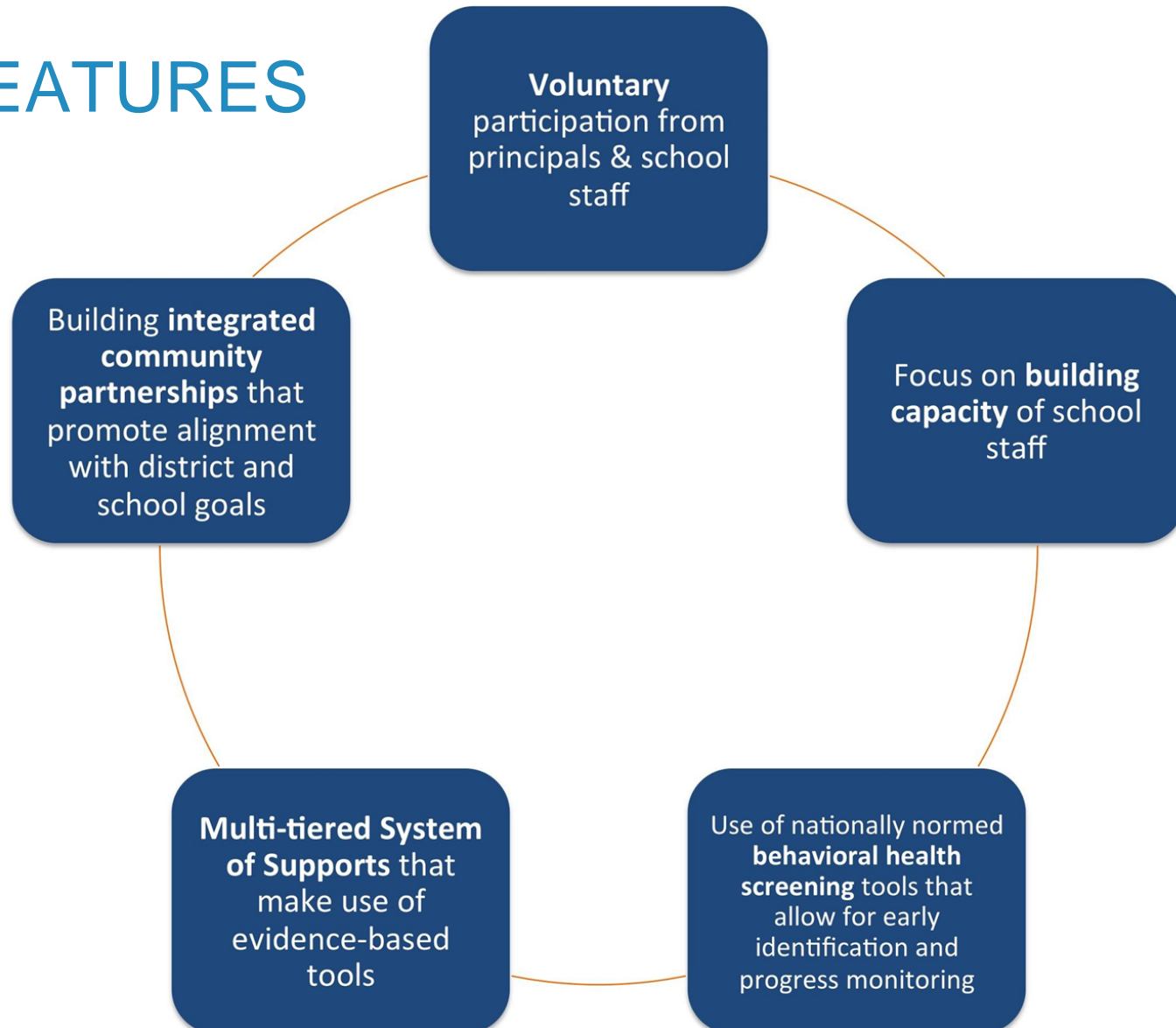
SCHOOL BASED BEHAVIORAL HEALTH COLLABORATIVE

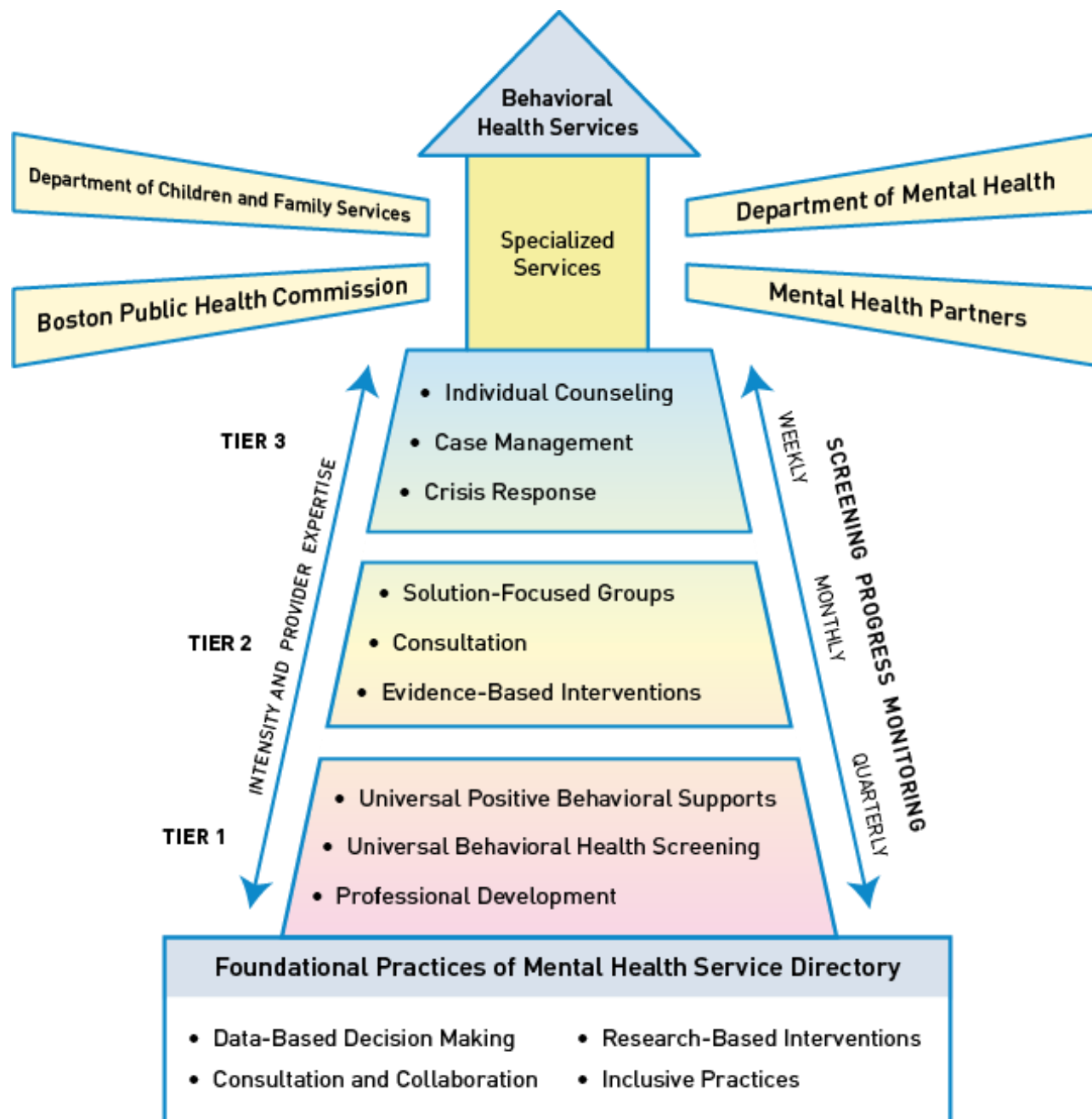
- 20 school based behavioral health agencies serving 90 BPS schools
- 60% of these partnerships provide services only 1 or 2 days a week



Comprehensive Behavioral Health Model (CBHM)

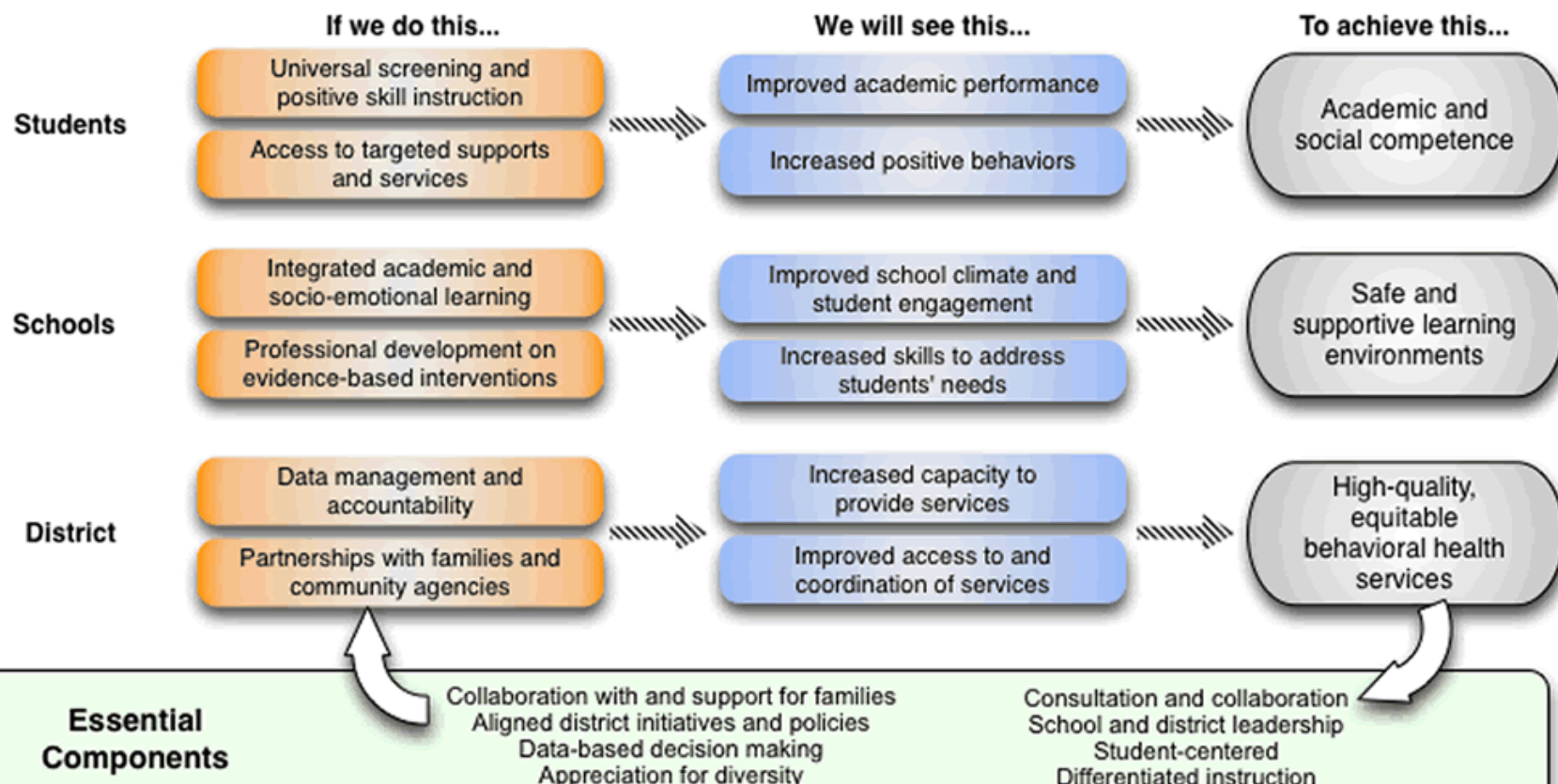
KEY FEATURES





BPS Comprehensive Behavioral Health Model

Mission: Ensuring that all students have a safe and supportive school where they can be successful



Guided by Massachusetts Department of Elementary and Secondary Education's Behavioral Health Framework

Theory of Change: Integrating behavioral health services into schools will create safe and supportive learning environments that optimize academic outcomes for all students.

CBHM Recognition

- Influence Professional Practices in Schools
 - National Association of School Psychologist Featured and Documented Sessions
 - NASP Public Policy Institute
- Highlight in Book Chapter: *Preventive Mental Health at School: Evidence-Based Services for Students*
- Site visits: Toledo Public Schools, Cambridge Public Schools, Methuen Public Schools, Colorado Legacy Foundation, New Orleans Public Schools, Lynn Public Schools
- Embedded in Colorado Framework for School Behavioral Health
- Future Conferences and Presentations
 - Advancing School Based Mental Health
 - National Association of State Directors of Special Education (Invited)
 - National Association of School Psychologists (Invited)
 - South Shore Collaborative Training (Invited)



Mutually Beneficial Partnerships

Key partners
made long-term
investment in
evidence-based
services

Partners provided
lots of resources
to support this
work

Integrated
services build
positive
outcomes for
students and
schools and
supports training
and research



Additional Information

www.cbhmboston.com



@CBHMBoston

